

# Public Engagement Board

## COVID-19 Programme Team

CLT Lead: Helen Gollins, Acting Director Public Health Trafford

27 October 2021

### Data surveillance update paper to Public Engagement Board

#### Report Summary:

This paper provides an update on the current data position for COVID-19 within Trafford and provides comparative information with other GM localities. Data insights into any potential trends are provided based on best available public health information and intelligence available.

---

#### Overview of the current position:

##### Overview

- There were **1118** confirmed cases during the week ending Wednesday 27 October, with the highest number of cases (**211**) reported on **Wednesday 21 October**.
- We have seen a decrease in our 7 days case rate to **471.0/100k** from **601.2/100k** in the previous week. Despite seeing further reductions in our case rate, most recent data suggests our rates are now levelling-off. -Trafford continues to have the highest case rate across GM. Trafford's case rate remains above the North West. Trafford's case rate still remains above the North West (**432.4/100k**) and England (**467.9/100k**) averages.
- Trafford's testing rate has dropped to **716.1/100k** from **765.7/100k** in the previous week with positivity remaining similar at **12.1%** compared to **11.9%** in the previous week.

##### Age Profiles

- Case rates continue to drop for young persons below the age of 17, but are levelling-off in our adult population.
- Case rates remain highest for 10-14 year olds (at **1227.7/100k**) but have dropped by **40.3%** when compared to the previous week (**2058.1/100k**).
- PCR testing rates are dropping but remain highest for 0-14 year olds.
- Case rates for residents aged 60+ have increased slightly from the previous week. However, rates have increased from the previous week for this age group in Trafford (at **236.8/100k** from **225.5/100k**), however we don't expect much change over the

coming days. Rates are higher among 60-74 year olds (**261.1/100k**) compared to residents 75+ (**125.7/100k**).

### Geography

- Case rates have dropped for most wards (**19/21**).
- Case rates are highest for the wards of Hale Barns (**784.4/100k**), Stretford (**668.6/100k**), Broadheath(**662.4/100k**), Altrincham (**613.9/100k**).
- Case rates have increased most for the ward of Stretford (+7.0%) and Broadheath (+9.4%).
- Case rates have decreased most in Trafford: Village (-51.5%) and Bowdon (-44.8%).

### Hospital Activity

- There were **185** COVID-19 admissions during the week ending Sunday 17 October compared with **164** COVID-19 admissions during the previous week (Including Manchester University Foundation Trust, Stockport Foundation Trust, and Warrington & Halton Teaching Hospitals Foundation Trust).

---

## Public Health Concern

Trafford's case rate reached the highest in the country on 9<sup>th</sup> October 2021 after peaking at a rate of **846.8/100k** (for the 7 days up to 09 October), since this time we have seen a steady decline in rates. Early September saw a sharp rise in testing and subsequent positive cases for young persons below the age of 17 that caused a gradual increase in Trafford's case rate throughout the month of September into October.

Trafford's testing rate over the past two weeks has been at its highest since the start of the pandemic, this has allowed effective methods of case findings, particularly for positive cases in educational settings, where Lateral Flow Tests are routinely conducted. The recent surge in cases has been heavily concentrated in the West of the borough and particularly for school age residents.

Our case rates remains high, despite recent data (over the past few days) showing a drop in the number of residents testing positive. Our immediate concern is that we go through further periods of increasing community transmission that spreads into other geographical areas, our care homes and population groups more vulnerable to adverse outcomes of the virus (aged 60+ and/or with preexisting health conditions).

The successful roll-out of COVID-19 vaccination, including booster vaccinations has helped weaken the link between infection and hospital admissions/COVID-19 mortality, however there are still 1/4 of eligible residents not vaccinated with at least 1 dose. Despite the successful roll out of the vaccine programme, we have seen inequalities in uptake, specifically linked to decreasing age and geographical areas with highest levels of deprivation. Vaccines offer protection but risk of infection is still present if borough-wide transmission is not controlled.

Although rates are declining, we recognise that must not be complacent as a borough and we will continue to focus our efforts on reinforcing COVID-19 secure measures. We will continue to support areas with lower uptake of vaccinations (especially in over 60s) for preventative measures and to improve vaccination uptake.

## **Outbreak Management and Risk Reduction**

### **Business settings**

- We continue to urge all businesses to make their workplaces COVID-19 secure, including ensuring that staff are routinely testing and properly protected when they return to the workplace.
- We continue to promote the importance of COVID-19 vaccinations for all eligible populations.
- We are monitoring the impact of events on COVID-19 rates in the borough.

### **Health & Social Care Settings**

- We need to work together to keep our most vulnerable populations protected. We are managing outbreaks in care homes. While some fully vaccinated staff and residents are testing positive, their disease is much milder than in unvaccinated people.
- Vaccination remains a safe and effective method of protecting yourself from severe illness.
- We will be encouraging all health and social care settings to continue to use all the current infection prevention and control measures to keep staff and service users safe.
- Trafford have recommended that providers pause indoor visiting by children and young people aged 16 and under. Exceptions include end of life visits, and visits that include outdoor socially distanced visits. This enhanced measure was reviewed on 1/11 and the recommendation is that it continue for a further two weeks.

### **Education & Early Years Settings**

- Secondary school pupils should continue with twice weekly LFD testing and all staff/pupils should wear face coverings in communal areas.
- Any children identified as a close contact should have a PCR test. The Outbreak Team has developed and shared a suite of resources with settings to support them.
- School household contacts; children and young people and staff who attend/work in schools and are household contacts should do daily LFD testing for a period of 10 days
- We are continuing to monitor numbers of cases reported through from Early Years settings, fortunately numbers are low, but we would continue to promote vaccination and routine LFD testing.

## Contact Officer:

Name: Tom Seery, Public Health Data Surveillance Analyst

Tel: 07929876642

Email: [Thomas.seery@trafford.gov.uk](mailto:Thomas.seery@trafford.gov.uk)

---

### 1.0 Vulnerable Population groups

1.1 We have seen case rates increase slightly in our 60+ population over that the past 7 days, however we do not to see much change over the coming days.

1.2 Table 1 shows that 60+ case rates are highest for the West of the borough but have reduced by 4.8% and are lowest for the South locality. Central locality has seen the largest increase of 20.7%

**Table 1. Case count and incidence per 100,000 population by ethnicity**

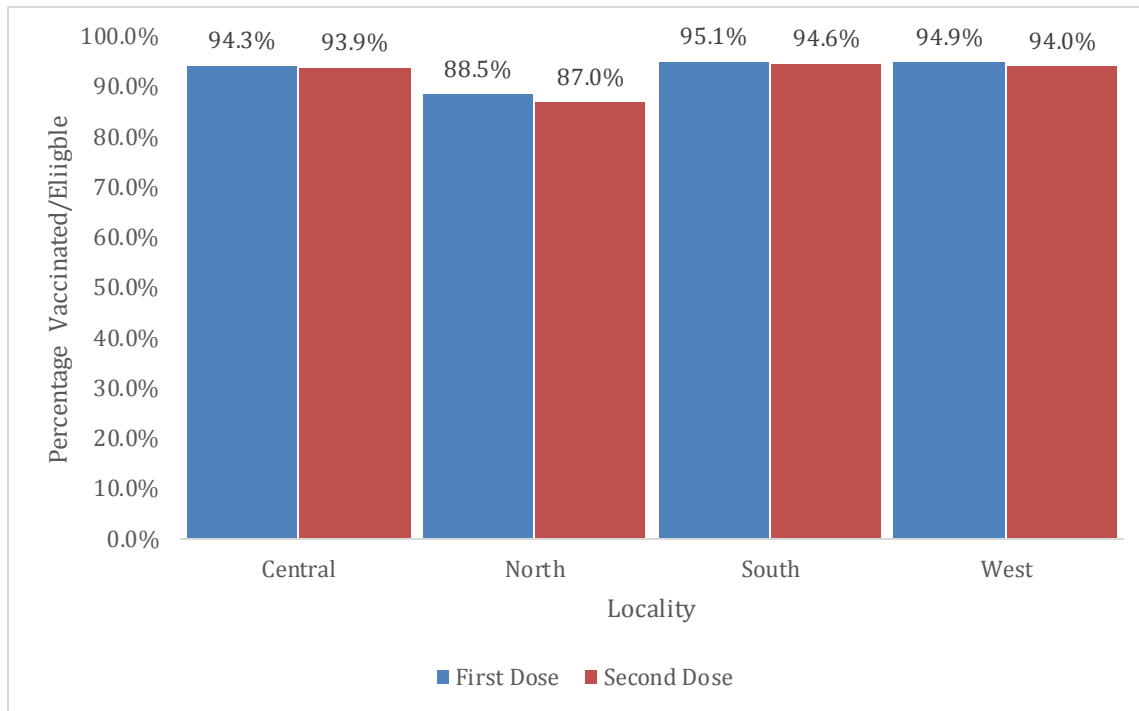
Trafford, 01 December to 27 October 2021

	Previous Week	Current Week	Percentage Change
West	390.3	294.6	-4.8
Central	191.9	268.6	20.7
North	248.0	212.6	-5.3
South	221.9	201.2	-11.4

1.3 Vaccine uptake (first dose and both doses) is high among our 60+ population, however we are seeing variation between our 4 localities.

1.4 Between localities with the highest and lowest uptake, we are seeing a percentage gap of 6.5 for first dose uptake, and 7.6 for second dose uptake.

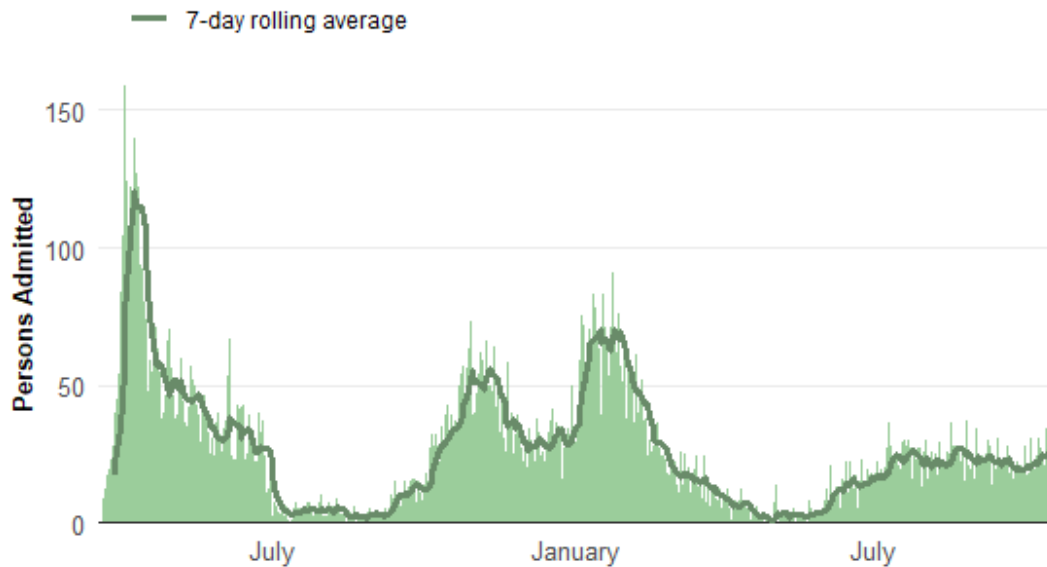
**Figure 1.** First and Second dose uptake for residents aged 60 years and over Trafford, up to 11 October 2021



1.5 COVID-19 hospital admissions have increased over the past 3 weeks, however there has been little change in the number of residents (not specific to Trafford residents) admitted to the 3 specified GM hospitals since late July.

1.6 The most recent three weeks (up to October 24th) shows a slight increase in the number of hospital admissions, so we will continue to monitor any week-by-week changes.

**Figure 2.** Daily Count of COVID-19 Hospital Admissions (including *Manchester University Foundation Trust, Stockport Foundation Trust, and Warrington & Halton Teaching Hospitals Foundation Trust*).  
19 March 2020 to 24 October 2021



Source: PHE Coronavirus Dashboard

---

## 2.0 Trend of COVID-19 cases within Trafford

2.1 Mid-July saw a sharp reduction in Trafford's case rate, dropping below **300/100k** with less than 100 daily cases being recorded for every 7-day period.

2.2 Case rates remained volatile throughout the month of August and early September, but we started to see a steady rise in cases after mid-September.

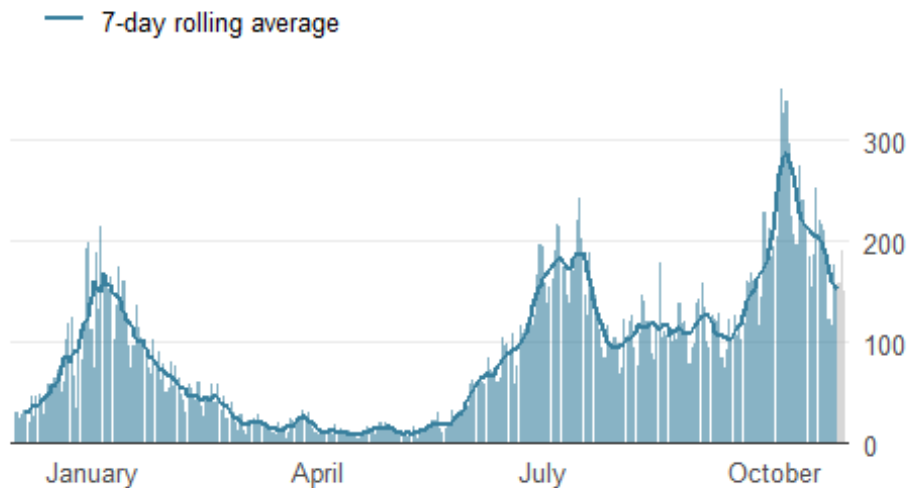
2.3 From October 4th, we began to record more than **300** daily cases on 3 consecutive days.

2.4 Our case rate peaked at a rate of **846.8/100k** for the 7 days up to October 9th, and reached highest in the country.

2.5 The most recent 4 days (up to October 27th) shows a reduction in the number of daily cases, however our case rate still remains high, above a rate of **400/100k**.

### Figure 3. Epidemic curve of daily confirmed new cases

Trafford, 01 December to 29 October 2021



---

### Age profiles

3.1 We have started to see the case rates reduce and the number of daily cases are starting to drop for most age groups.

3.2 The biggest reduction when compared to the previous week has occurred in 0-14 year olds (**21.6%**).

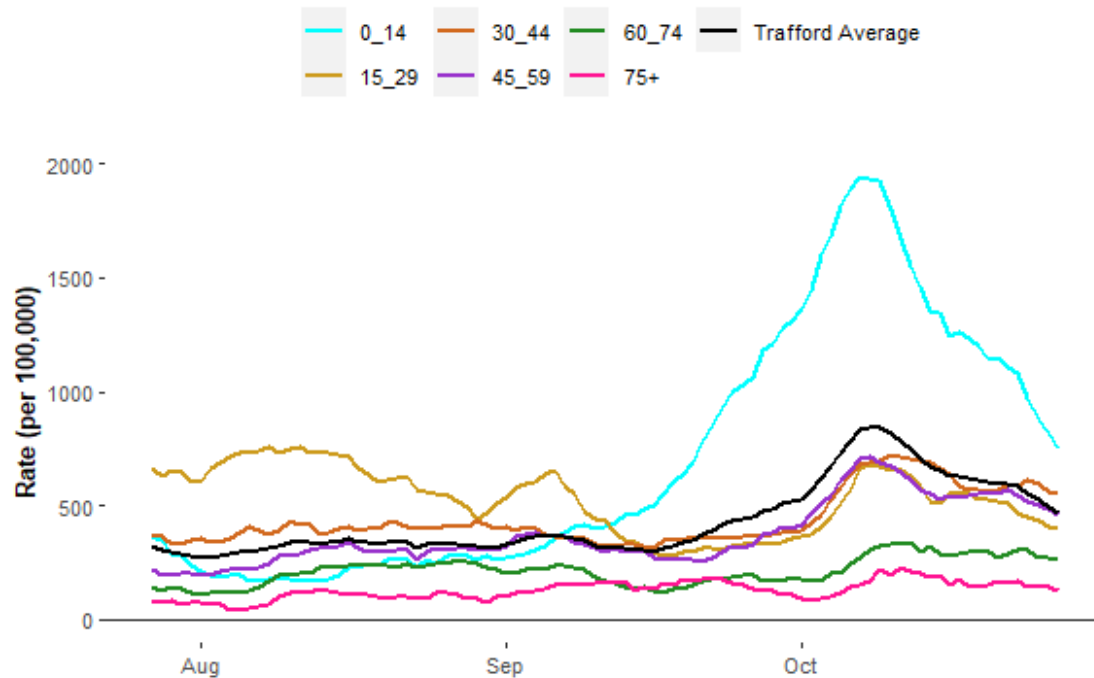
3.3 Case rates remain highest for 0-14 year olds (at **750.5/100k** from **1144.6/100k** in the previous week), followed by 30-44 year olds (at **551.8/100k** from **557.9/100k** in the previous week).

3.4 We are starting to see a slight increase in the number of those over 60 years of age testing positive as rates have increased from the previous week (at **238.8/100k** from **225.5/100k** in the previous week).

3.5 Case rates are higher for 60-74 year olds (**261.1/100k**) when compared to residents aged 70+ (**125.7/100k**).

**Figure 4. Age-specific case rates per 100,000 population Trafford, 7-day moving average)**

Trafford, 22 July 2021 – 27 October 2021



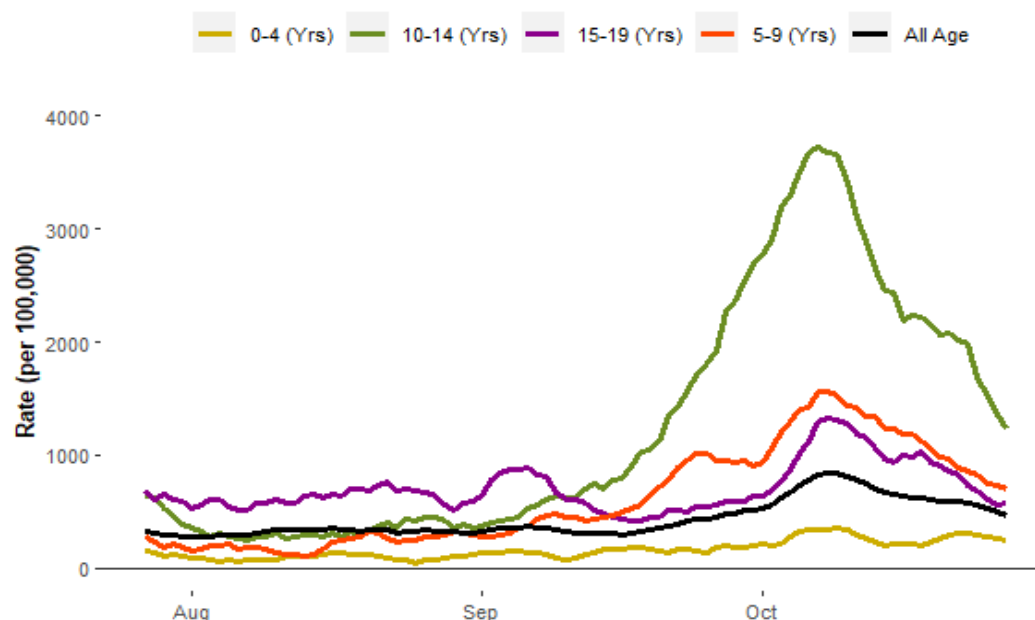
3.6 Case rates are dropping for all young persons below the age of 20.

3.7 Case rates remain highest for 10-14 year olds (**1227.7/100k**) but have dropped most (**40.3%**) for this age group during the most recent week.

3.8 Case rates are also dropping for 5-9 and 15-19 year olds, however are still above the Trafford average.



**Figure 5. School case rate per 100,000 residents (7-day moving)**  
Trafford, 22 July to 27 October 2021



---

## 4.0 Geographical spread of COVID-19 in Trafford

4.1 Case rates remain highest in the South of the borough and are lowest for Trafford North.

4.2 Rates have dropped for **19** wards, and have increased for **2** wards.

4.3 Case rates are highest for the wards of Hale Barns (**784.4/100k**), Stretford (**668.6/100k**), Broadheath(**662.4/100k**), Altrincham (**613.9/100k**).

4.4 Case rates have increased most for the ward of Stretford (+7.0%) and Broadheath (+9.4%) during the most recent week.

4.5 Case rates have decreased most for Village (-51.5%) and Bowdon (-44.8%) during the most recent week.

---

## 5.0 PCR Testing

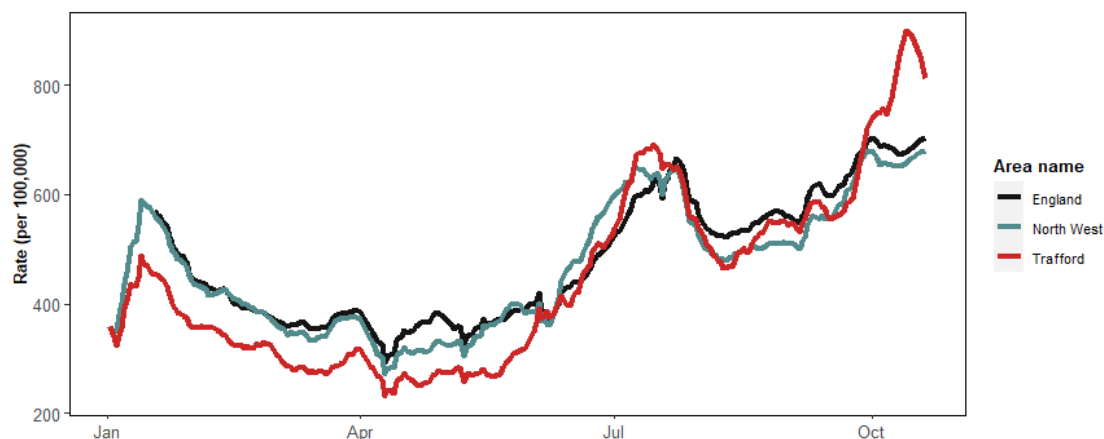
5.1 We were seeing a sharp increase in Trafford's testing rate since late September, spiking above the North West and England averages, carrying out **900** daily tests per 100,000 residents at its peak on October 10th.

5.2 Most recent data shows signs that testing rates are starting to level-off, whilst testing rates for England and the North West are starting to increase.

5.3 We continue to see lowest testing rates in Trafford North.

5.4 As of October 27, Trafford's daily testing rate sits at **751.5/100k** which is a decrease from the previous week (**765.7/100k**). Trafford's positivity rate is above to the north west (**432.4/100k**) and England average (**467.9/100k**).

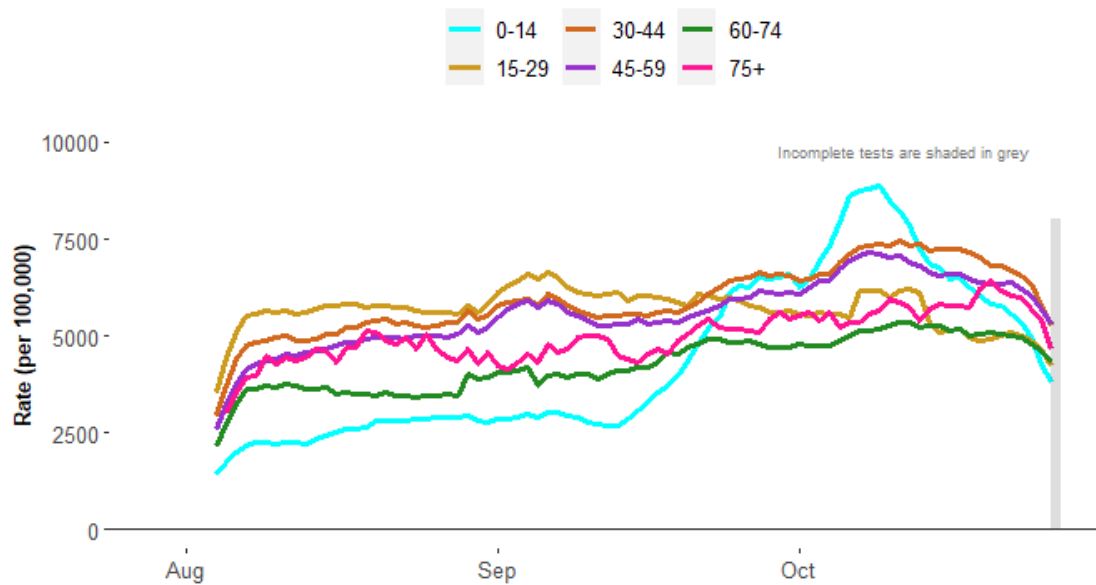
**Figure 6. Daily testing rate (7-day average): England, North West, & Trafford**  
Trafford, 01 January to 27 October 2021



5.5 Testing rates had been lowest for 0-14 year olds throughout the month of August, however we saw a spike in testing (potentially linked to surge in cases for our school age population) in mid-July, carrying on into the month of October and highest amongst all the age groups.

5.6 Most recent data is starting to show a drop in testing rates for all age groups.

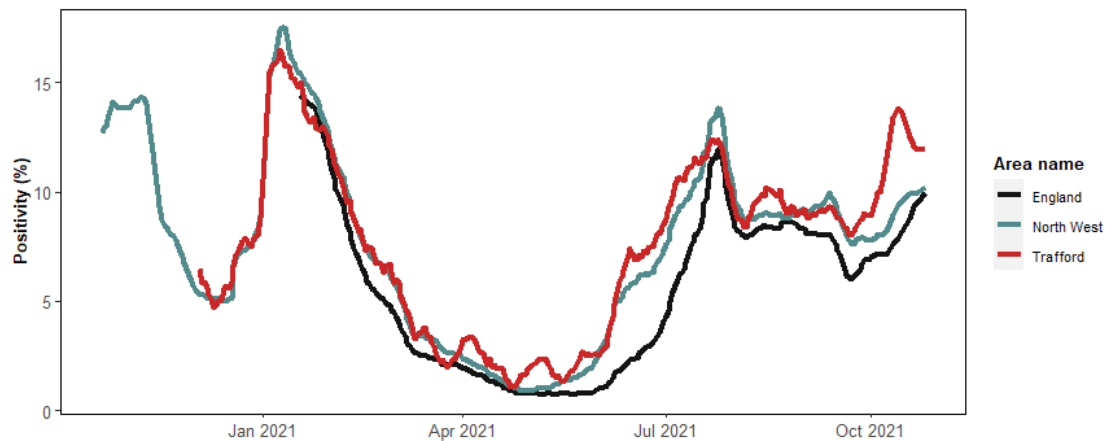
**Figure 7. Age-Specific Testing rate per 100,000 residents (7-day moving)**  
 Trafford, 15 July to 27 October 2021



## 6.0 Positivity

6.1 Positivity rates follow a similar trend to PCR testing rates. We saw a spike in Trafford's positivity rate in late September, reaching as high as **13.8%** on October 09th, however more recent data shows that positivity rates may be dropping. 6.2 As of October, Trafford's 7-day positivity rate sits at **12.1%** which is an increase from the previous week (**11.9%**). Trafford's positivity rate is above the England average (**9.9%**).

**Figure 8. 7-day Positivity rate: England, North West, & Trafford**  
 Trafford, 01 January to 27 October 2021



Source: PHE Covid-19 Situational Awareness Explorer

## 7.0 Comparative data of COVID-19 cases within the local authorities of Greater Manchester

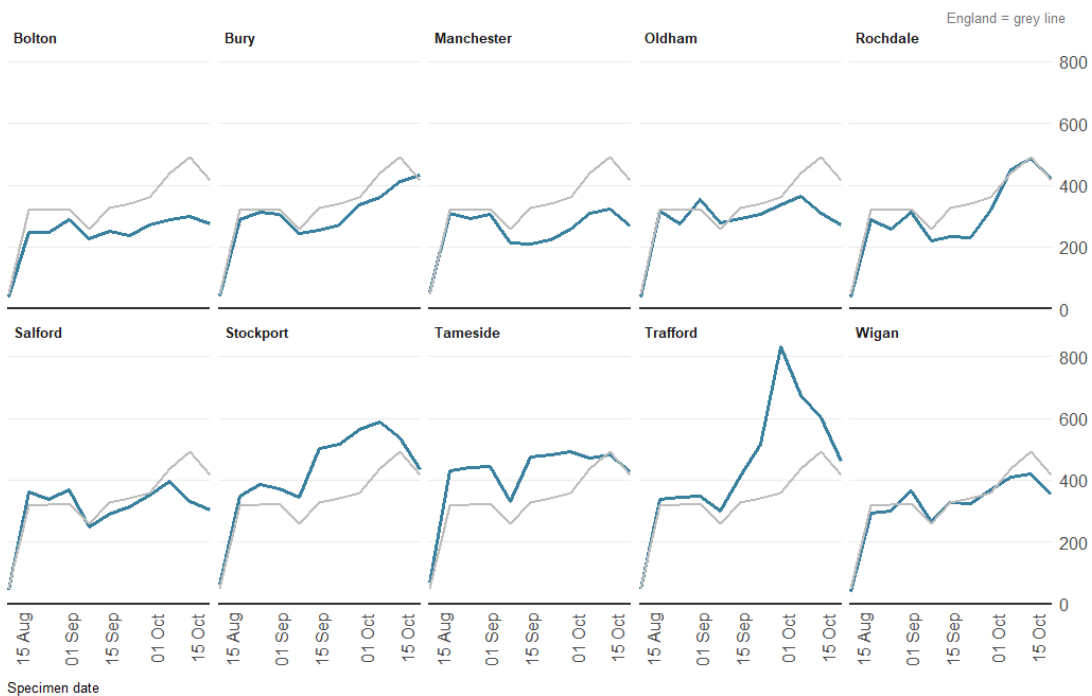
7.1 Some GM boroughs (Trafford included) started to see a slight rate increase during the second week of August, however those rates started to stabilise.

7.2 Most GM boroughs started to see a slight rate increase during September, however Trafford's case rate continued to rise throughout the whole month and saw even further increases during the beginning of October.

7.3 We are starting to see a reduction in Trafford's case rate, although still highest across the ten GM boroughs.

7.4 All other GM boroughs apart from Bury are seeing a fall in cases.

**Figure 9. Weekly incidence per 100,000 population by local authority Greater Manchester, 07 August to 27 October 2021**



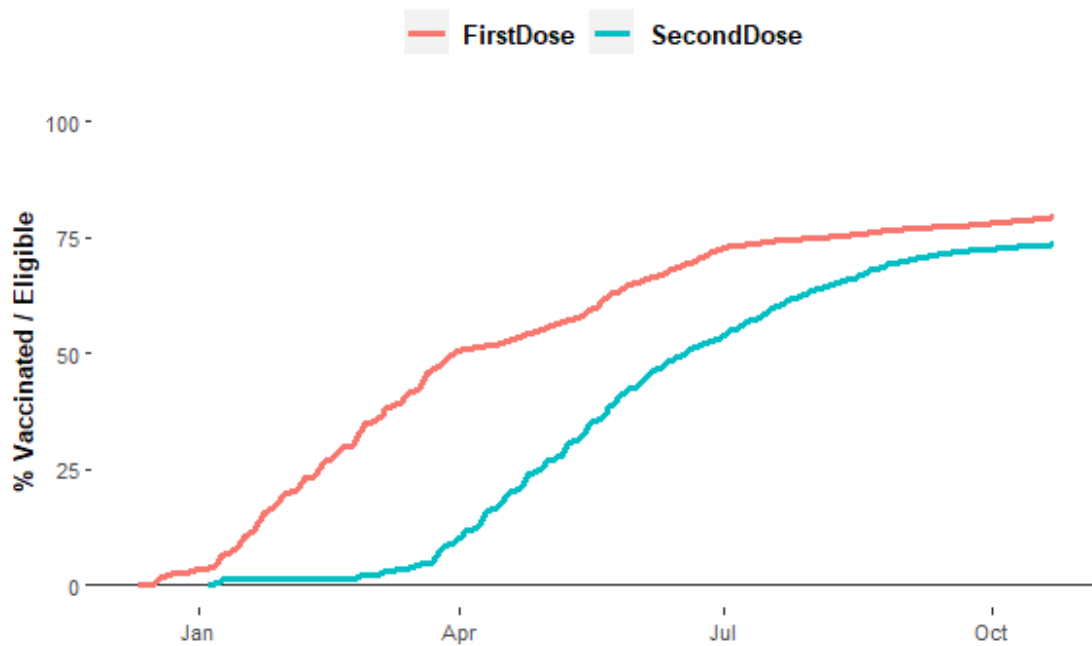
## 8.0 Vaccinations

8.1 The total percentage of Trafford residents (Aged 12+) administered their first vaccine dose on **Saturday 23-10-2021** was **79.4%**.

8.2 The total percentage of Trafford residents (Aged 12+) administered both vaccine doses on **Saturday 23-10-2021** was **73.5%**.

### Figure 10. Running total of first and second dose vaccines for Trafford residents (12 years and above)

Trafford, 09 December to 30 October 2021



Source: COVID-19 Situational Awareness Explorer

8.3 Vaccine uptake is lowest In Trafford North and highest for Trafford South.